

SoundBy PointSource



SoundBy PointSource

sound in design

Music touches us in the form of dance and movement, but it also moves us in an emotional way when its rhythm and energy flows through our body. Music is the body's language and has been used for millennia to bring people together.

SoundBy PointSource was conceived to bring music into your home and combine it with a beautiful look.

Designed for Montana's shelves, we have created a music system that integrates - elegantly and functionally - with your furniture. Montana's flexibility and variety of colours are designed to suit your wishes and needs.

The perfect partner

PointSource Acoustics has long-standing experience in high-tech acoustic solutions which complement Montana's uncompromising furniture craftsmanship, visual sense, creativity and flexibility. All this without compromising the sound.

The two companies are unique in their own fields yet perfect partners in creating a singular, integrated music furniture.



Let your music live



Montana Sound Unit gives new life to your music

The Montana Sound Unit has been created to be straightforward and easy to use. Few buttons, simple connectivity and easy operation. Stream music directly from your iPhone or iPad, listen to your favourite radio channel or enjoy the magnificent sound of your favourite movies - all with just a few clicks on the remote control or the Montana Sound app.

Despite its small size, the Montana Sound Unit is a true compact "power plant" with a powerful 2x125W amplifier and power supply that ensures solid stability in the sound image under all conditions. This little but powerful system ensures high quality sound while you listen to your music. It allows you to play loud, yet it maintains a clean sound. This is what makes Montana Sound Unit the perfect partner for your party.

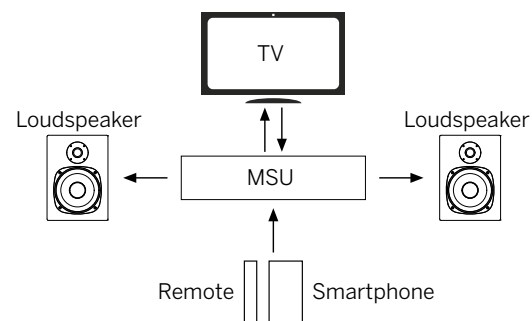
Its compact design fits easily into Montana's modules up to 30 cm in depth and there are still a vast variety of connectivity options in the form of HDMI, AirPlay, DLNA, analogue and digital inputs and DAB + radio.

Speakers without compromise

The loudspeakers are created with the exquisite technology of our sound experts and built to fully exploit the space of the bookshelves.

We have designed the speakers to match the dimensions of the furniture, foam pads and bass-port. The membranes are designed with kapoch fibre and papyrus for optimum mass, stiffness and damping. Thus, the speaker units play with vibrancy and detail in the sound. You will experience the speakers as extremely musical while they provide an authentic live mood.

The speakers come in three sizes which fit perfectly into Montana's product range. All speakers are optimized for the Montana Sound Unit and can all be placed horizontally and vertically, whichever best suits your home.



Select source, such as TV, Blu-ray or DAB+ radio or music streaming, everything controllable from the Listen to Montana app.

Montana Hi-Fi series

The Montana Hi-Fi series consists of the Montana Sound Unit and three different sized speakers designed for the Montana bookshelves. Montana Sound Unit is a 2 x 125 W amplifier and DAB+/FM radio, which via AirPlay and DLNA, streaming wireless and plays music from your phone, tablet or computer. Everything is controlled with a remote control or via an app for iOS or Android. The Montana Hi-Fi series can be built into Montana modules with depths of 30 cm, 38 cm or 46.8 cm.







100% invisible

Montana offers “invisible sound” - the fronts of the Hi-Fi series are available in coloured perforated steel or black front fabric. The front conceals the technical aspects without compromising on sound quality.

All cables are discreetly tucked away inside and behind the modules and kept out of sight.



Enjoy both movies and music

The development process has focussed on continuous listening tests, so the speakers can be used for both movies and all types of music. The loudspeakers' wide sound image sound ensures that the whole family can enjoy the sound while watching movies or listening to music. It also provides greater flexibility when designing your bookshelf system.





Spice up your everyday life

Play your favourite music on the Montana Sound Unit through your smartphone, iPad or computer via AirPlay, while you cook. The graphical pillar of the modules is designed with black fronts that highlight the placement of speakers and the Montana Sound Unit. Just add your spices of modules, colours and components into your personal Montana Hi-Fi setup.



Investing in the future

Montana Sound Unit can do it all. It handles digital streaming media like AirPlay and DLNA. In addition, it has all the necessary connections to analogue media such as CD player, turntable and, of course, digital media such as TV, PlayStation, Apple TV or Chromecast as well as built-in digital radio (DAB+).

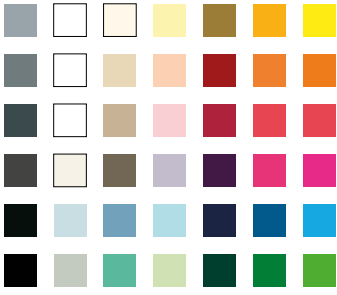




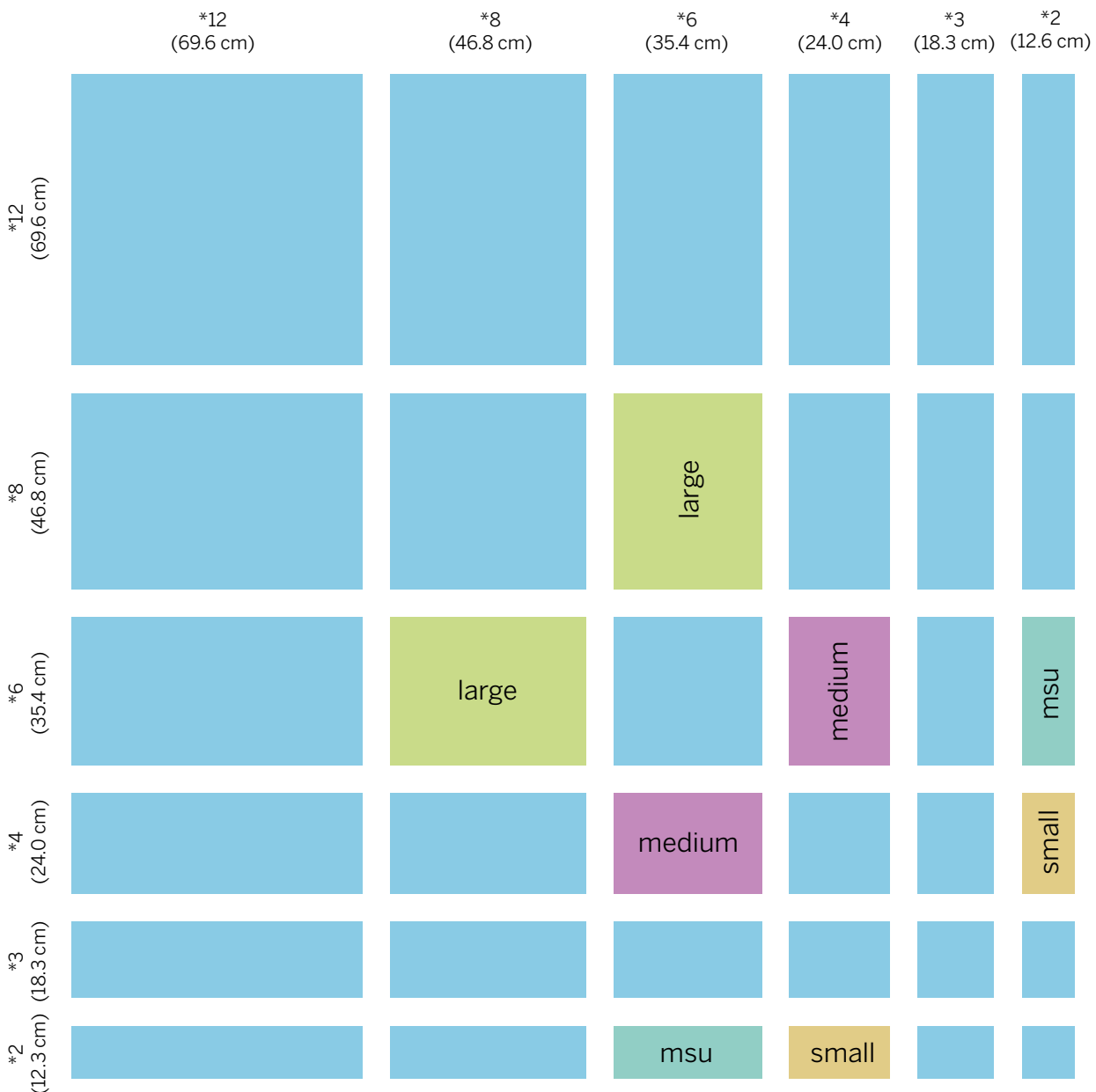


Make life easier with AirPlay

Montana Sound Unit and Speakers - shown here in large - are designed for optimum music and movie sound. Gone are the days with cables and docking stations. With AirPlay streaming, you can play music completely wirelessly. Play with the Montana modules and place the Montana Sound Unit either horizontally or vertically and emphasize it with a front in your favourite colour.



2x125W amplifier
 AirPlay
 HDMI hub
 Analog input
 Optical & Coax
 FM/DAB+ radio
 Tone selection



Your own personal design

Flexibility and personalization lie behind the Montana system. “Made by You” has been the basic theme behind the development. The possibilities are almost infinite.

Shelf modules are available from 12.6 cm x 12.6 cm to 69.6 cm x 69.6 cm. Drawers and doors can be fitted in many dimensions and designs. The modules can be mounted on plinths, legs and castors or hung on the wall with a special bracket that allows you to gather cables behind the modules. All found in a myriad of colours and surfaces that are tempting to combine in many attractive ways.

A new dimension

With Montana you can be both discreet and provocative, elegant and raw at the same time. Express classic taste and try out your newest ideas.

Flexibility with the Montana Hi-Fi series from **SoundBy PointSource** has another dimension. The speakers labelled “small” are discrete, yet, surprisingly, deliver a rich sound. The speakers labelled “medium” and “large” give a wide spectrum and impressive sound for everyday and festive occasions. Common to Montana The Sound Unit and the three speakers can be built into rack modules from a depth of 30 cm. Light and elegant - with great sound.

On the previous pages we have shown examples of book and audio systems - from small to large. See the following pages for further details for built-in sound.

Your craftsmanship

As your unique design requirements evolve, we can advise you on your needs and the available options.

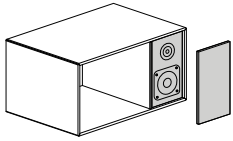
Once you have ordered your unique storage and shelving system at Montana and Montana Sound Unit and speakers at soundby.pointsource.dk, simply mount the speakers in the shelves and connect the cables to your Montana Sound Unit.

You will find videos and guides on our website under the Support link.

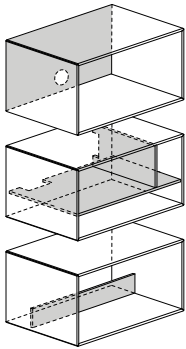
Be inspired!

Want to be more creative? Plunge yourself into the world of Montana and PointSource's product range. Loudspeakers and Montana Sound Units need only be mounted on specially-designed brackets to maintain the high finish of the furniture.

Hi-Fi modules with loudspeakers



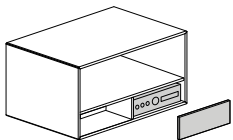
The speakers are tailor-made for Montana modules and can be integrated into a single module or in combination with shelves / dividers. The speakers are available in three sizes (see page 14) and can be mounted vertically or horizontally. Speaker fronts can be selected either with black fabric or steel lacquered in several of Montana's lacquer colours. When designing your Montana shelving frame, the only thing you need to be aware of, is that there is enough space for the desired speakers.



Hidden cables

Under the fixed shelf of the module there is a cable magazine, where all wires and connectors can be gathered together out of sight. The front panel is fitted with magnets, making it easy to remove to add new equipment or making changes. When done, the panel easily clicks back in place.

The back panel is provided with a round cut for cables such as power cords and speaker cables. The shelf and divider have carved cut-outs for cable routing between the Hi-Fi equipment inside the module.



Space for Montana Sound Unit

The Montana Sound Unit can be mounted vertically or horizontally in the modules and placed behind a perforated front or a perforated folding door in combination with shelves / dividers. The front is available in two sizes in perforated steel, which is painted in several of Montana's varnishes. On page 14, you can see how much space to reserve for your Montana Sound Unit. It can also be mounted in a module of 30cm depth, if you choose connectors that don't take up too much space at the back.





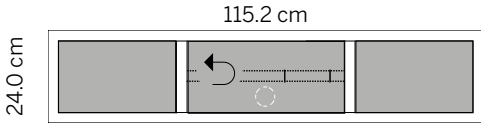


Montana Sound Sections

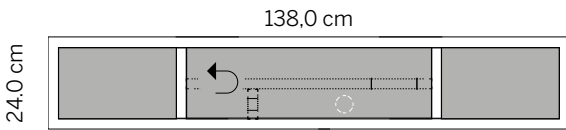
If you want a simple, stylish and beautiful shelving frame to mount Montana Sound Unit and speakers, choose from the following Montana Sound Modules. Just select the colour for the furniture and fronts to suit your wishes. The modules are available with perforated fold-away doors designed for operating electronic devices through the door.

Ready-to-go TV & Sound modules*

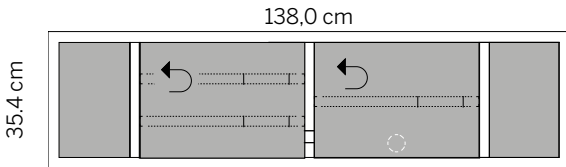
These three modules elegantly hide your sound equipment away and is easy to setup. They are designed to create the perfect frame around the family entertainment system.



VJ12



VI12



SI12



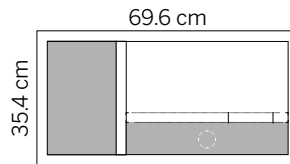
SI12

TV & Sound modules* that can be freely combined

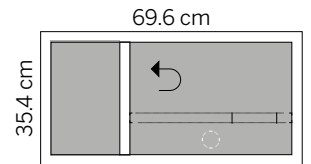
With these modules you can freely design your bookshelf. Be inspired by these pages and explore your local Montana store for more information.



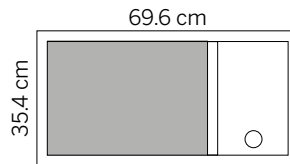
VJ12



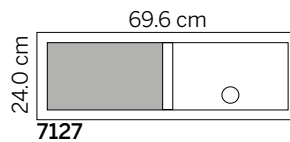
6131



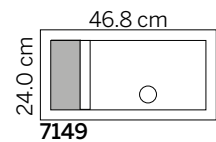
6133



6137



7127



7149

Accessories

Choose between wall brackets, 3 cm or 7 cm plinths, leg or castors.



Look at page 14/15

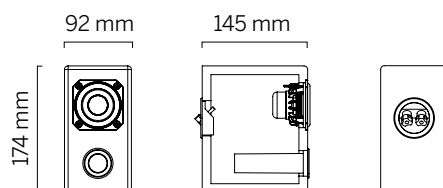
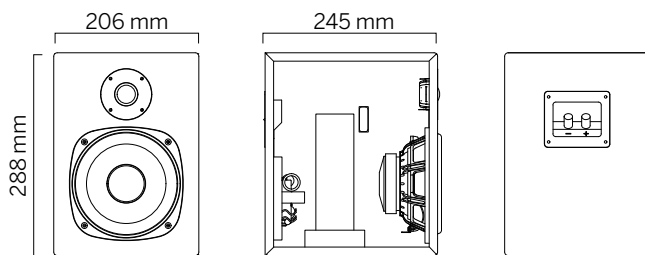
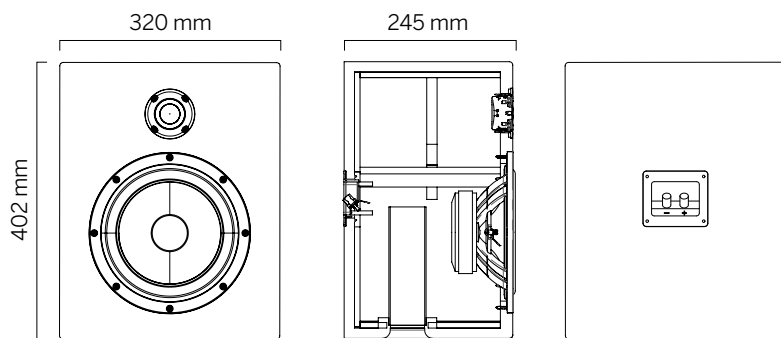
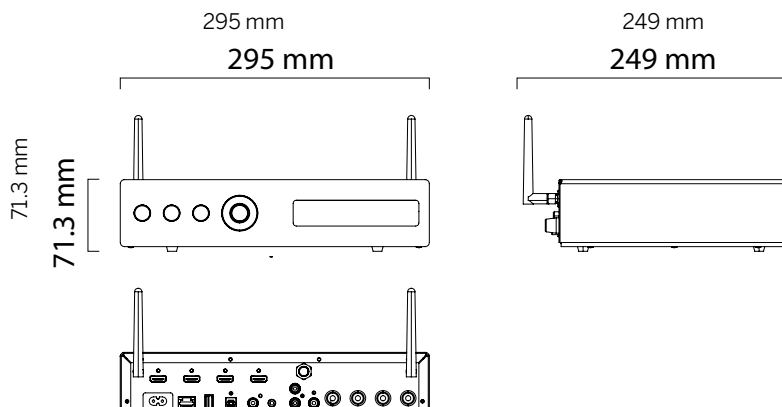


Look at page 9

* Read more on the Montana website or store for more info on the Montana Sound Module system.



Technical Specifications



Montana Sound Unit

A small yet powerful stereo amplifier with HDMI, AirPlay, DLNA and DBA+ radio. TV and other sources can be connected. The Montana Sound Unit will be the heart of your living room and will ensure integration and quality sound to your speakers.

Montana Sound Unit consists of:

- 2 channel stereo amplifier 2 x 125W RMS
- DAB+ and FM radio
- Remote control with volume control, input selection, EQ sound modes and radio program selector.
- IOS and Android App

Handles inputs from:

- AirPlay wireless input from iOS devices
- DLNA wireless input from Android devices
- 3 x HDMI input to e.g. Blu-ray, Set-top box, PlayStation, etc.
- 1 x HDMI output with ARC for TV connection
- 1 x Ethernet connection
- 1 x USB Input (for updates)
- 2 x Digital inputs (optical and coaxial)
- 2 x AUX (mini jack and phono)
- 1 x Subwoofer output (for active sub)

Loudspeakers

Large: *6 x *8

Frequency range (+/- 10dB) [Hz]:	28 – 30.000
Sensitivity (2.83V/m) [dB]:	91,2
Nominal resistance [ohm]:	4
Recommended amplifier power [W]:	60 – 300
Crossover frequency [Hz]:	2.400
System type:	Bas reflex
Tuning frequency [Hz]:	30
Terminal:	Single wire
Dimensions [mm]:	402 x 320 x 245
Auto fuse (on tweeter):	Yes

Medium: *4 x *6

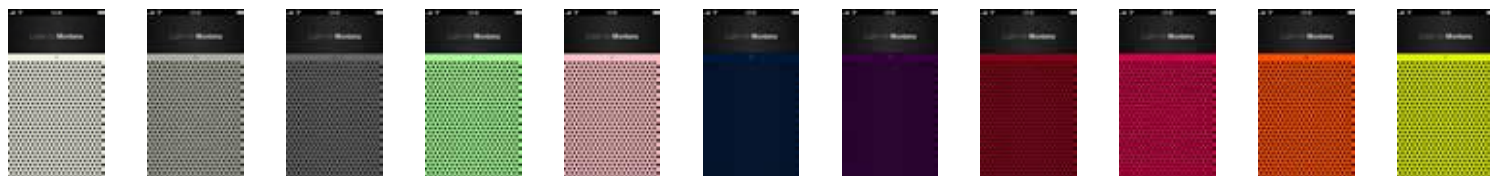
Frequency range (+/- 10dB) [Hz]:	45 – 30.000
Sensitivity (2.83V/m) [dB]:	88,5
Nominal resistance [ohm]:	4
Recommended amplifier power [W]:	40 - 125
Crossover frequency [Hz]:	2.800
System type:	Bas reflex
Tuning frequency [Hz]:	48
Terminal:	Single wire
Dimensions [mm]:	288 x 206 x 245
Auto fuse (on tweeter):	Yes

Small: *2 x *4

Frequency range (+/- 10dB) [Hz]:	80 – 20.000
Sensitivity (2.83V/m) [dB]:	82,5
Nominal resistance [ohm]:	8
Recommended amplifier power [W]:	40 – 125
High-pass filter 1. order [Hz]:	90
System type:	Bas reflex
Tuning frequency [Hz]:	105
Terminal:	Single wire
Dimensions [mm]:	174 x 92 x 145
Auto fuse:	Yes

SoundBy PointSource

The Montana Hi-Fi series can be experienced at our partners who have a great knowledge of the Montana Sound Unit and the speakers. They can guide you to choose the best solution for you. See more at: soundby.pointsource.dk



Listen to Montana



Carsten Tinggaard (left) with Peter Lassen, founder of Montana Furniture

The founder of PointSource Acoustics, Carsten Tinggaard, was the former Chief Engineer of three of the most prominent Danish speaker companies: Scan-Speak, VIFA and Peerless. Carsten was employed by Peerless when the production still took place in Karlslunde, Denmark. During his time at Peerless, Danish Sound Technology and Tymphany, he developed hundreds of speaker units for some of the world's most renowned and respected professional Hi-Fi speaker brands.

2009 was a turning point in Carsten's career when he founded PointSource Acoustics. Here his passion for high-quality craftsmanship and excellent sound lives on, and he continues to develop innovative sound solutions for a wide selection of speaker brands as well for the company's own brand: **SoundBy PointSource**.

In 2010, two men had the same vision about integrating high-quality sound into design furniture, without compromising visual expression. This vision was the origin of Montana Sound, where Montana supplies the furniture, and PointSource Acoustics delivers the sound. The close and highly committed cooperation between Montana and PointSource Acoustics guarantees delivery of the best solutions to the customer.



SoundBy PointSource

soundby.pointsource.dk